

White Cottage, Aldeburgh, Suffolk

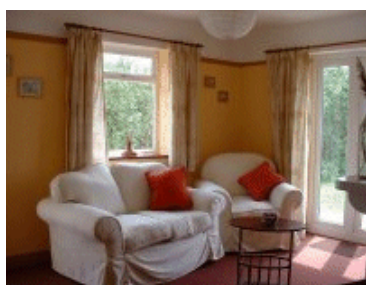
Sleeps 2/4



On the route of the Suffolk Coastal Heritage Path

A cosy bungalow in a hamlet of four, standing in its own plot, offering a rare opportunity for a quiet secluded holiday. Ideal as much for the retired couple, as families with children, its large garden of about half an acre and surrounding Suffolk heathland provide a wide peaceful outlook and plenty of exciting areas for older children to explore.

- Kitchen with fridge with freezing compartment;
- Cooking by electricity and a microwave
- Colour TV, DVD player
- Two bedrooms, one good-sized, one slightly smaller, both equipped with 3' twin beds, sets of drawers and wardrobes.
- Shower room, with toilet and washbasin
- Electric heaters in every room
- Plenty of parking space



The kitchen/dining room and the sitting room are both double aspect, giving particularly good views over the heath. The sitting room is a good size with settee and chairs and doors opening out onto the garden. There is a colour TV, DVD player and radio/cassette/cd player.

Garden table, chairs and a barbeque set are provided. There is always plenty of wild life in the garden to watch, particularly songbirds and rabbits. It is worth noting that the burrowing activities of our numerous and very industrious rabbits, and the fact that there is open access to the heathland and adjoining farmland, do mean that caution has to be exercised in allowing very young children to wander unsupervised.

White Cottage is situated on the route of the Suffolk Heritage Coastal Footpath, although you can take your car down the track to park right outside the cottage. This point on the footpath is the start of a popular three-mile walk

Website: <http://www.whitecottage.biz>

White Cottage, Aldeburgh, Suffolk

to the Snape Maltings Concert Hall and Crafts Centre on the River Alde. A twenty-minute walk from the cottage will also bring you to the Suffolk Wild Life Trust bird hide on Hazelwood Marshes, which is open to the public at all times. Aldeburgh Golf Course is also within a short walking distance. In the cottage, you will find a supply of photocopied guides for several country walks straight from the front door, including one taking you down to the coast.

Aldeburgh, an historic town with the ancient Moot Hall, is a five-minute drive and you will find the usual everyday shopping facilities, as well as antique and craft shops, good restaurants and coffee shops. Fishermen draw up their boats on the wide shingle beach and sell their fish from the shore. There is also sailing at Aldeburgh and further down river at Orford.

The unique coastal resort over a mile north of large Mere, a shallow rowing, canoeing or be interested to see the and Windmill. Felixstowe Lowestoft and Great Yarmouth to the north have the usual seaside attractions and fun fairs, and Constable country is also within comfortable driving distance for a day trip.



of Thorpeness, just Aldeburgh has the artificial lake for punting and you may “House in the Clouds” to the south and



Misty morning – view over the heath from the kitchen

For more pictures visit our website www.whitecottage.biz

Weekly rates for 2010			
Weeks beginning Friday:			
07 May 2010	£400	23 July 2010	£535
14 May 2010	£400	30 July 2010	£535
21 May 2010	£400	06 August 2010	£535
28 May 2010	£400	13 August 2010	£535
04 June 2010	£475	20 August 2010	£535
11 June 2010	£475	27 August 2010	£535
18 June 2010	£475	03 September 2010	£475
25 June 2010	£475	10 September 2010	£475
02 July 2010	£475	17 September 2010	£475
09 July 2010	£475	24 September 2010	£475
16 July 2010	£535		

Friday changeover

Website: <http://www.whitecottage.biz>

**White Cottage,
Aldeburgh, Suffolk**

- Prices include bed linen and towels – on your arrival you will find your beds freshly made-up and one bath towel, hand towel and tea towel per person
- Prices include reasonable use of electricity.
- The usual kitchen and dining utensils and other household items are supplied.
- Whilst cleaning takes place in between lettings, tenants are still asked to leave the cottage clean and tidy, to take good care of the property and to pay the full cost of any damages or breakages.

Alan and Margaret Hancock
9 The Oaks, Yateley, Hampshire, GU46 6EA
Telephone 01252 876718

E-mail: enquiries@whitecottage.biz



Website: <http://www.whitecottage.biz>